

Lip Conecocheague Creek.

N. 65 1/2 W. 46

S. 75 W. 64

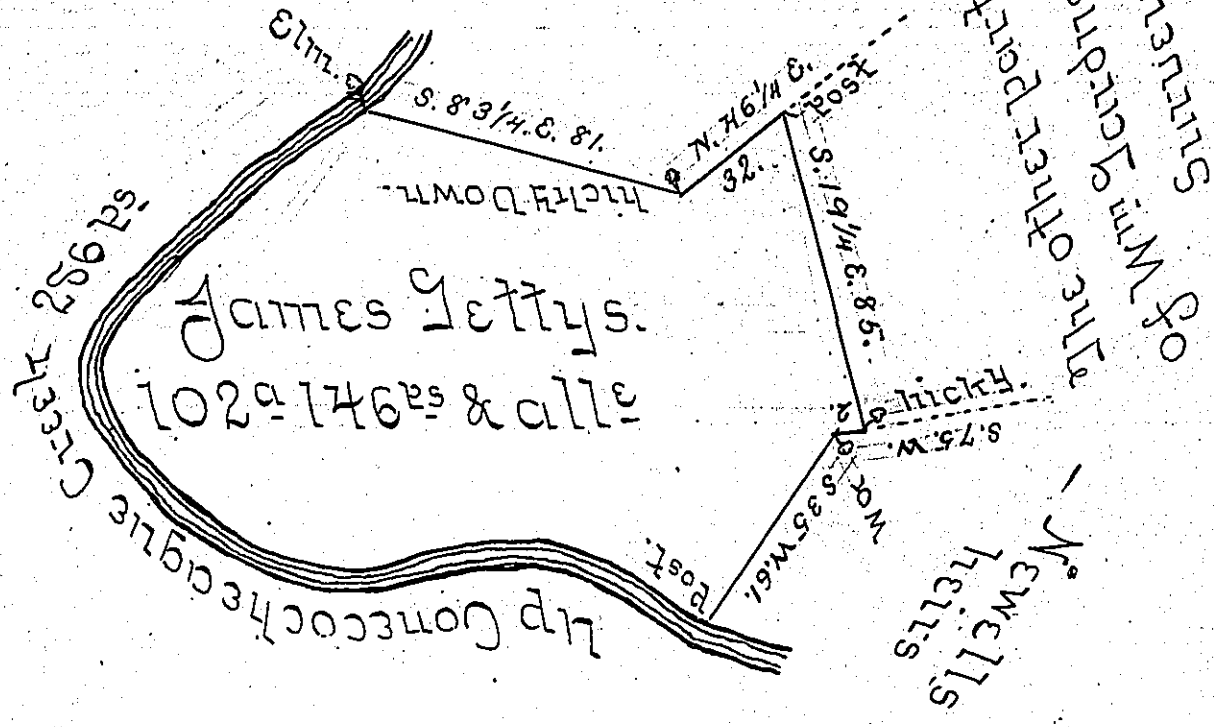
N. 65 W. 57

N. 44 W. 41

N. 45 1/2 E. 98

286.

Dr. John King,



Draft of a tract of land situate in Peters Township Franklin County containing one hundred and two acres one hundred and forty six perches and allowance of six Percent for Roads, being part of a larger tract of 205a 132rs and allowance, surveyed to William Gardner on his Warrant dated February 11th 1742 Resurveyed and laid off

May 19th 1806 } P. Tho. Kirby U.S.

To Samuel Cochran Esq. }  
 Surveyor General of Penna. }

IN TESTIMONY that the above is a copy of the original remaining on file in the Department of Internal Affairs of Pennsylvania, made conformably to an Act of Assembly approved the 16th day of February, 1833, I have hereunto set my Hand and caused the Seal of said Department to be affixed at Harrisburg, this thirteenth day of January 1905.

*Isaac R. Brown*  
 Secretary of Internal Affairs.